



# A journey through light

*Len Lye Centre  
New Plymouth  
New Zealand*

ARCHICAD 20's shimmering signature building, the Len Lye Centre, is New Zealand's only single artist museum. Its design is deeply influenced by the life, ideas, writings and work of the famous New Zealand Kinetic Artist, Len Lye (1901–1980).

## PATTERSONS

### Patterson Associates

Type: **Cultural**  
Cost: **AUD 11.5m, USD 8.3m**  
Year: **2016**  
Size: **32,300 ft<sup>2</sup> / 3,000 m<sup>2</sup>**  
Software used:  
**GRAPHISOFT ARCHICAD & BIMx, Revit Structures, & MEP Rhinoceros, Ecotect, Radiance, SketchUp, 3ds Max, Odon, Iris**

Photo ©Patrick Reynolds





Photo ©Patrick Reynolds

***"[Len Lye would] be  
absolutely thrilled, he'd  
be dancing around in  
this place,"***

John Matthews  
Chairman  
Len Lye Foundation

Lye himself said in 1964, that "great architecture goes fifty-fifty with great art." The building's design articulates this philosophy – he believed an artwork was a piece of consciousness communicating with the future. He used light as his primary medium.

The Len Lye Centre is situated in Taranaki, New Zealand, a region known for its stainless steel production industries. The 3,000 sqm (32,292 square feet) building engages with the urban square via a light reflecting and transmitting façade. This transfers light in a holographic effect from one place to another to enliven and activate both.

The Len Lye Centre is designed to fulfil multiple requirements. It needed to integrate with a proposed new art and cultural precinct, which links through to the commercial heart of the city. It also needed to seamlessly merge with an existing heritage Art Gallery facility in a converted movie theater. The finished building introduces new gallery spaces, education studios, a 62 seat cinema, the Len Lye Archive and a dedicated motor room for his kinetic works. The resulting space is reverential, creating a sensory experience from light as a 'temple' for art.

*"Lye was fascinated with temples and in conceiving the overall design it seemed appropriate to draw inspiration from the "megarons," or great halls, of the classical world, as well as from Polynesian forms and ideas. These ideas also influenced Lye. To do this, we developed our thinking in a holistic or adaptive way; as a systems methodology. This meant that rather than using proportion or aesthetics, we used patterns in the ecology of the project's environments to drive the design elements.*



On the circular loop  
Photo ©Sam Hartnett



Photo ©Patrick Reynolds

*For example, the shimmering, iridescent colonnade façade is manufactured locally using stainless steel - Taranaki's 'local stone' - this links both Lye's innovations in kinetics and light as well as the region's industrial innovation. So by using stainless steel we can celebrate and communicate to visitors the reason for the fortunate gift of his art works to Taranaki." says Andrew Patterson, director, Patterson Associates*



The façade's deeply pocketed shape provides a series of images or reflections and attracts people to the facility as a result. Viewed from above, the colonnade's top edges create a local koru form, displaying the Museum's Polynesian influences.

Inside the building, the colonnade creates a theater curtain, with three asymmetric ramped sides embracing the space of a processional journey ascending along a ramp into various galleries. There are divisions in the circulation. Light is drawn inside through the apertures in the colonnade, and these create moving light patterns on the walkway, perhaps a form of passive kinetic architecture.

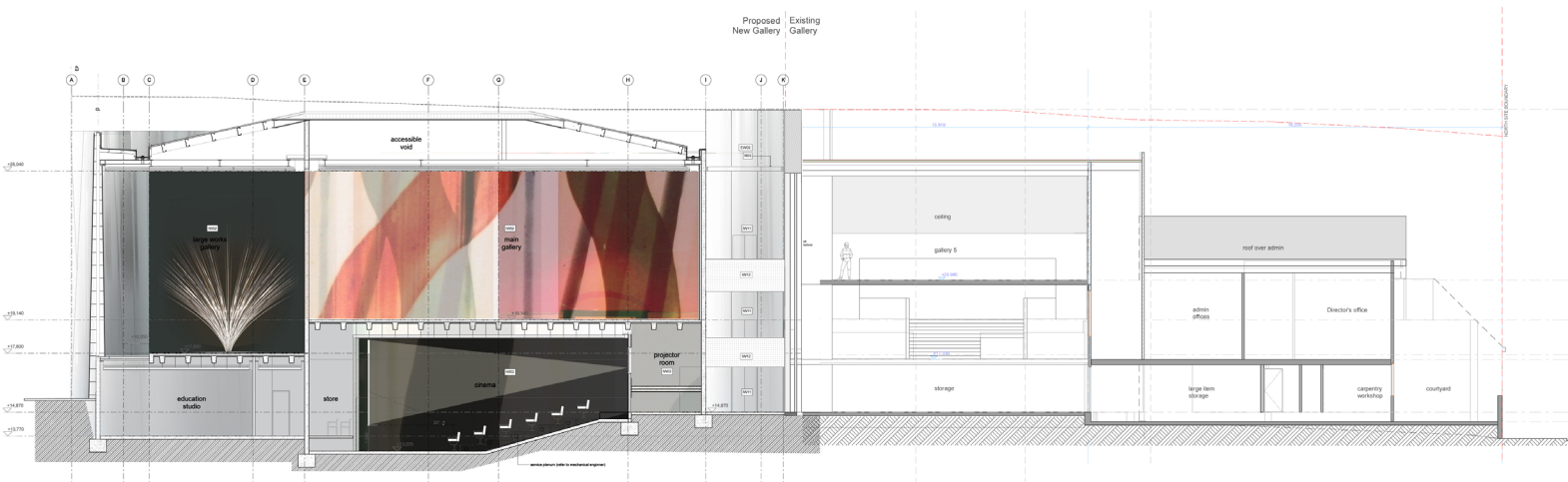


The reflection effect of the  
façade lightens up and warms the  
shady forecourt  
Photo ©Davor Popadich

The ramp first accesses to a type of vestibule, or 'pronaos' in Ancient Greece. This space is formed by the 9m high large works gallery for Lye's kinetic art work. The procession of the colonnade then morphs into a portico, announcing the main gallery. This functions as a Megaron or Maori 'wharenuī' for Len Lye where the deities and ancestors are referenced and represented by Lye's inspirational work.

At this point, high level bridges cross to the smaller, existing Govett Brewster Art Gallery, which itself has been retrofitted from the city's decommissioned heritage cinema. The bridges respectfully link into the former Theater before the procession exits out via a grand stair. The undivided procession as a circular loop allows visitors to appreciate the changing museum and gallery displays within one flexible and shared structure, heritage and new.





Longitudinal section of the project showing the galleries and the connection of the new and the existing buildings  
Image courtesy of Patterson Associates

## Teamwork and the modern colonnade

Patterson Associates' 28-member team is united and motivated by architectural innovation, bringing their diverse expertise together to collaborate. A broad range of disciplines come together in their architectural work. Each project comes from selecting individual talents to create the right 'super team' for particular projects.

For the Len Lye Centre, four out of the practice's 14 ARCHICAD users formed the super team working together closely using ARCHICAD's Teamwork.

***"Using the Teamwork file has always been fantastic; the late change of color code identity message within Teamwork is great."***

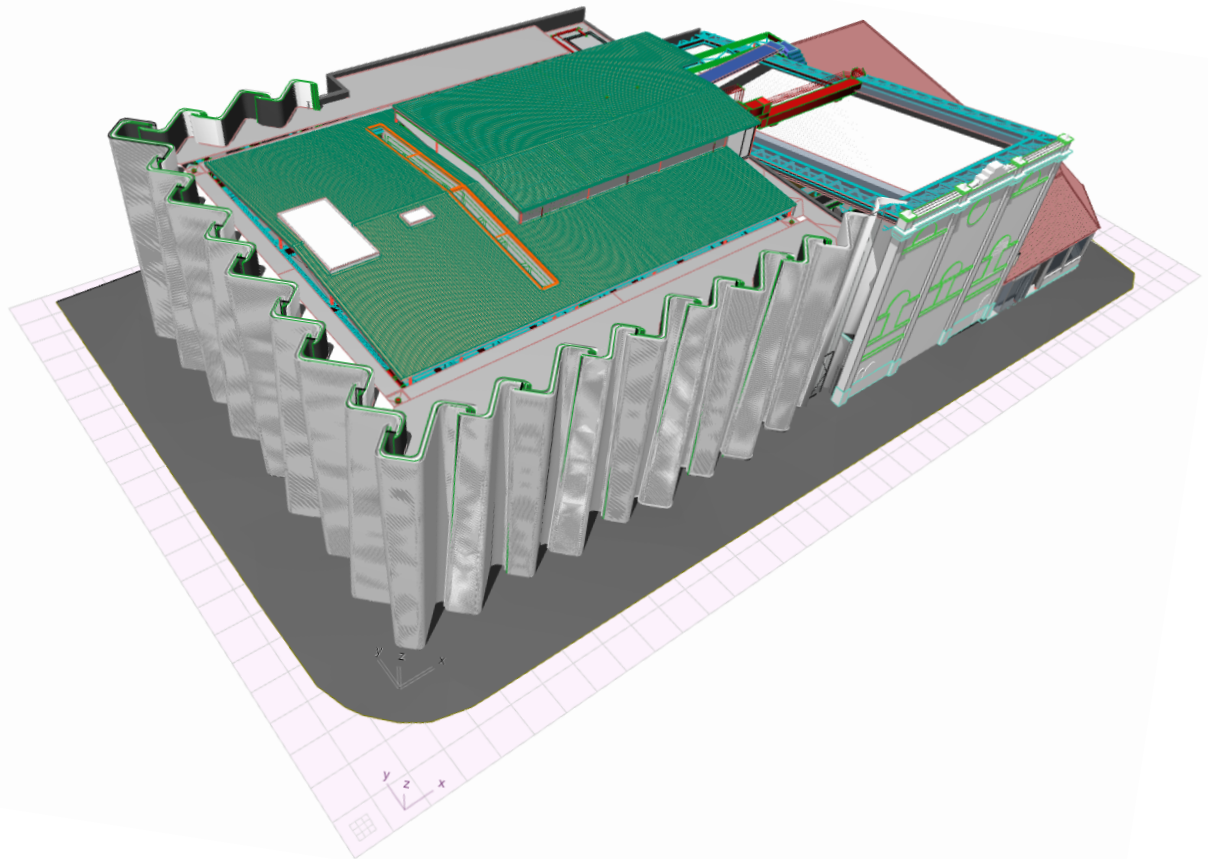
Shane Taylor  
BIM Manager, Pattersons

The façade of the Len Lye Centre consists of 20 monolithic 14 meter-high curved, pre-cast concrete columns. Their exterior surfaces are clad in highly polished stainless steel curtains with glazing hidden in between each column. The shapes of the columns are designed to reflect light through these into the building according to the time of day and reflect light back out at night. Scale, materials, light and atmosphere are composed as in a film to activate the senses and incite a poetic dimension. The façade acts as a kind of living object connecting the outer and inner spaces it divides.

Starting the project in 2010 with ARCHICAD 14, the design team's biggest challenge was the modeling of this façade. Due to the complexity of the geometry they used Rhino to model single façade shapes, then exported to ARCHICAD to link the modules together. Later, when ARCHICAD 15 and 16 were introduced, the façade was remodeled using the Shell and Morph tools.

ARCHICAD model of the  
Len Lye Centre  
Image courtesy of  
Patterson Associates The  
colonnade modeled with  
ARCHICAD's Shell Tool  
Image courtesy of  
Patterson Associates

The design team built a detailed, 3D, live model, integrating the 3D structural and MEP elements as well. This model was used to extract all of the project documentation, to communicate the design intent towards the client, and to clarify construction issues during the two years of construction.



***“BIM is a tool that we use to communicate with stakeholders, with the builders, with everybody connected to the project. It’s a leadership tool that enables us to deliver the project.”***

Andrew Patterson, Director

## **The role of OPEN BIM in the design and construction**

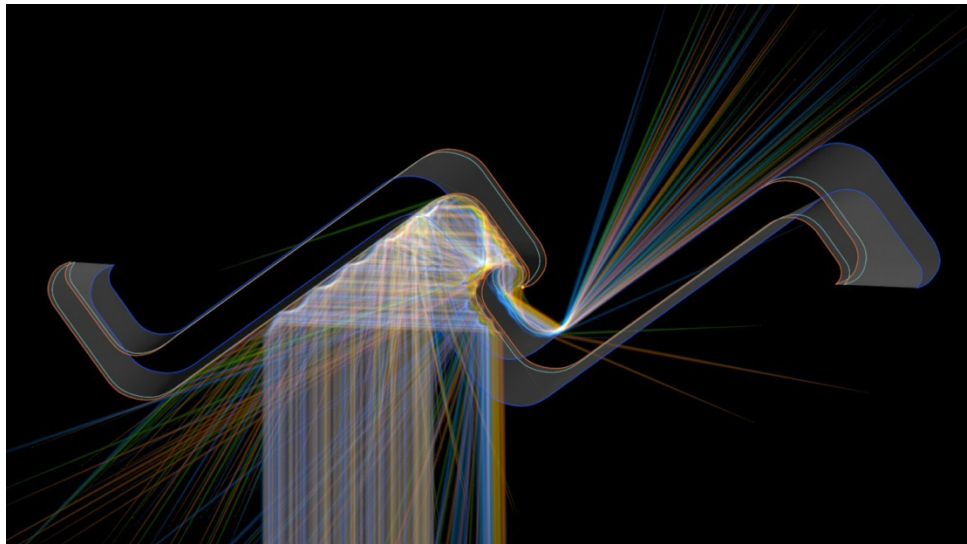
Pattersons recognized early on the importance of a strong OPEN BIM foundation for their design and construction workflows. OPEN BIM was fundamental in working out the complex geometry of the building in three dimensions, ensuring a seamless transition between consultants from design to manufacture.



Setting protocols early in the project between BIM managers of each consultant was key. As this was a test project using the IFC translator for some of the consultants, a number of demo models were exchanged between consultants to confirm that future exchanges would be seamless. OPEN BIM data exchange was implemented and data shared on a weekly basis.

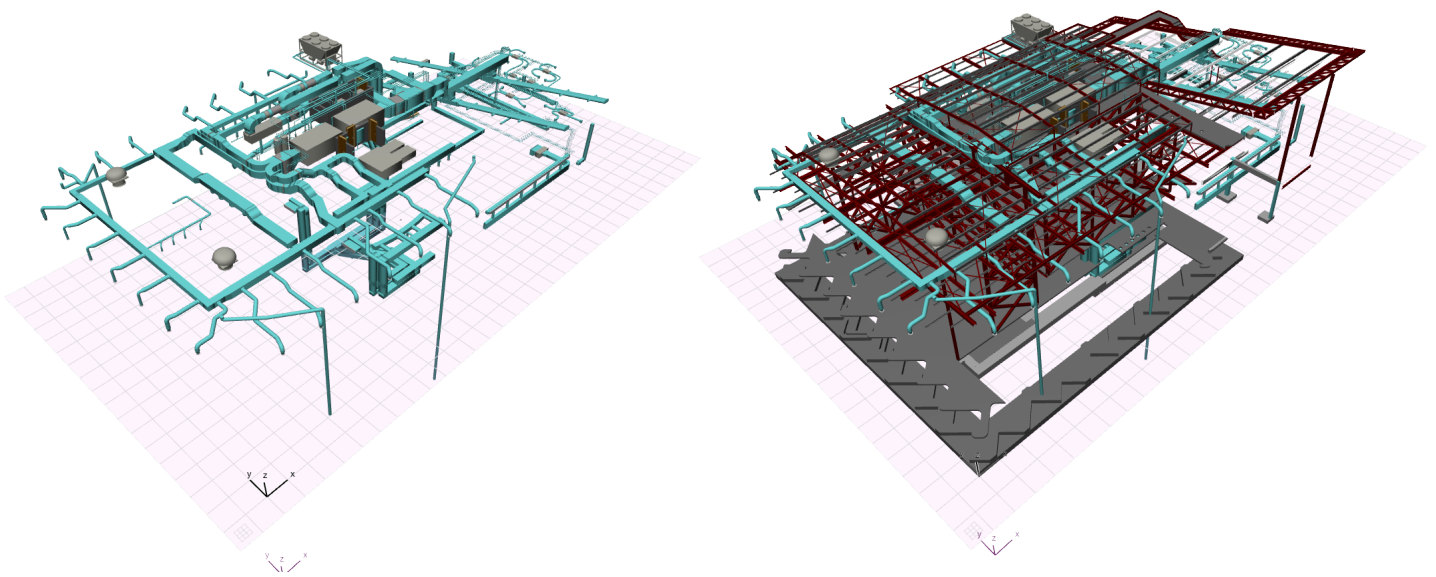
Once the geometry of the façade was ready in ARCHICAD, it was exported to Ecotect 2011 in conjunction with Radiance to document sun path reflections. The architectural model of the colonnade columns was transferred directly to the pre-cast manufacturers, while the light transferring effect was tested on site with real size sample elements.

Simulation of the holographic light effect transferring light between the inside and the outside spaces  
Image courtesy of  
Patterson Associates



IFC import-export for mechanical and structural work was critical to the success of the project. The imported mechanical and structural models remained in the architectural model for reference only (hidden layer), then the structural engineers concrete components and the MEP elements were re-imported into the model and took precedence on the BIM model.

The final model was exported to SketchUp to allow the Gallery staff to place artwork within the building, forward planning the exhibitions two years before the gallery actually opened. For rendering and animations, the model was exported to 3ds Max of Autodesk.



Imported MEP and structural  
data of the Len Lye Centre  
in ARCHICAD  
Image courtesy of  
Patterson Associates

***"The function of IFC  
open file format has  
greatly eased the  
collaboration process  
between the architect  
and the engineers."***

Shane Taylor  
BIM Manager

A very interesting use of OPEN BIM processes was the acoustic planning of the exhibition spaces. Since the kinetic works of Len Lye are very loud, the designers had to take the sound of the works into account when designing the interior spaces and the placement of Len Lye's works. Acoustically sealing the galleries was one of the options, but in the end Pattersons and the acoustic consultants came up with a much more exciting solution.

The loud pieces go off periodically; with the timing of silent and loud periods and planning the placement of the works carefully, they ended up with the innovative solution of driving the visitors through the exhibition spaces using sound. The exported ARCHICAD model made this possible. The acoustic consultants used Odeon and Iris, a room acoustic and a 3D acoustic impulse software to measure the sound effects emanating through the museum from a particular piece placed in a gallery.



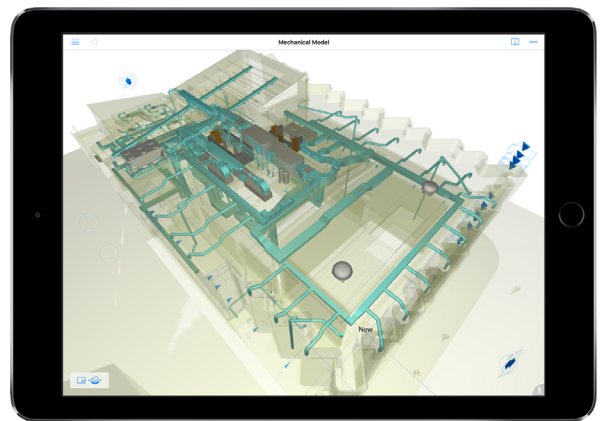
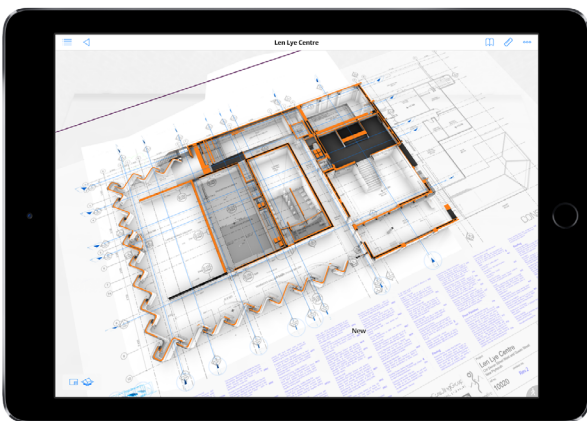
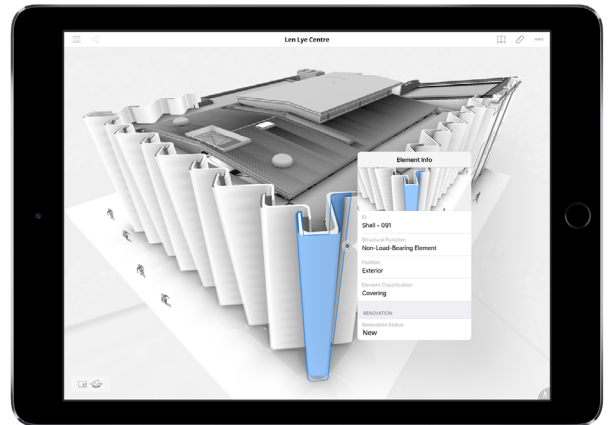
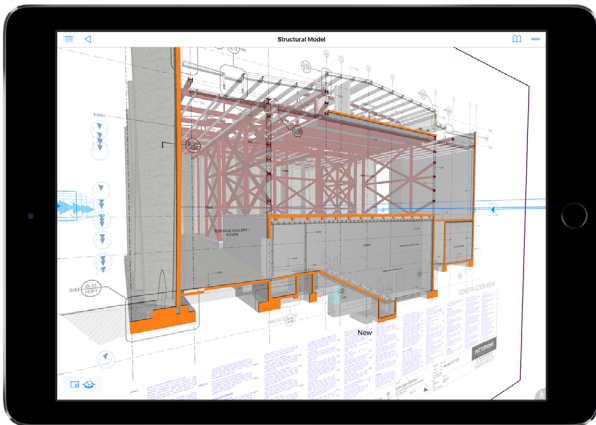
## BIMx on the construction site

***"This is a fantastic tool that openly and interactively explores 3D Building Information Models on mobile devices. It saves us from having to carry big paper files to the site!"***

Shane Taylor  
BIM Manager

Since the Len Lye Centre was fully modeled, it was an easy and natural step to generate a BIMx model from it containing all the 2D information available in the model. Patterson Associates has used BIMx since the day it first came on the market.

*"The Len Lye Centre's BIMx model was used during site inspections, while the builders used it when making site rounds, allowing them to visualize the building three dimensionally when resolving complete junctions. And the tool also came in handy when the client required simulations on how the designed museum spaces would work in specific event scenarios."* says Shane Taylor, BIM Manager, Pattersons.



BIMx PRO screenshots of the  
Len Lye Centre Hypermodel  
Image courtesy of  
Patterson Associates

## Value management with ARCHICAD

An art gallery project always requires a highly-serviced environment, resulting in very high MEP – mainly HVAC – costs, which can be as high as 25% of the total building cost. ARCHICAD was indispensable when Pattersons value-managed the project due to funding difficulties they were able to coordinate the various HVAC engineers and sub-consultants to reduce that cost significantly just by the way the ducting worked through the building.

The very strict international artwork loan standards narrow down the environmental range the museum has to comply with. With an art museum this size, this usually means two to three plant rooms. Once Pattersons decided to move from the initially planned two plant rooms to one, they could implement this change very quickly via the exchange process between consultants, saving a major portion of the building budget.

A breathtaking, inspiring building  
Photos ©Andrew Patterson (left)  
©Sam Hartnett (right)



## Summary

By using state-of-the-art BIM tools, Patterson Associates have created a concept design that has resulted in a breathtaking, inspiring building, reaching far beyond the borders of New Zealand. Tasked with a number of requirements, the Len Lye Centre is a building for the future, firmly rooted in the community and the vision of the artist who inspired it.



## About Patterson Associates

[Patterson Associates](#) is a New Zealand practice. Its philosophy is based on a very simple idea: if a building can feel like it naturally 'belongs,' or fits logically in a place, to an ecology, a time and culture, then the people that inhabit the building will likely feel a sense of belonging there as well. This methodology connects theories of beauty and environment. As well as its New Zealand work, Patterson's have clients and projects as far afield as India, Singapore, Australia, Germany and China.

Andrew Patterson, Director of  
Patterson Associates and his team  
Image courtesy of  
Patterson Associates



## About GRAPHISOFT

[GRAPHISOFT®](#) ignited the [BIM](#) revolution in 1984 with [ARCHICAD®](#), the industry first BIM software for architects. GRAPHISOFT continues to lead the industry with innovative solutions such as its revolutionary [BIMcloud®](#), the world's first real-time BIM collaboration environment, [EcoDesigner®](#), the world's first fully BIM-integrated "GREEN" design solution and [BIMx®](#), the world's leading mobile app for BIM visualization. GRAPHISOFT is part of the [Nemetschek Group](#).

All information and architectural  
models presented in this document are  
the property of  
Patterson Associates  
©Patterson Associates 2016

GRAPHISOFT and ARCHICAD are  
registered trademarks of GRAPHISOFT.  
All other trademarks are the property of  
their respective owners

**For more information on ARCHICAD, visit [www.archicad.co.nz](http://www.archicad.co.nz) or contact us on 0800 900 889**